

RESULTS THAT MOVE YOU!



Sarah Toop
PERSONAL REAL ESTATE CORPORATION

604-855-8060
www.sarahaoop.com

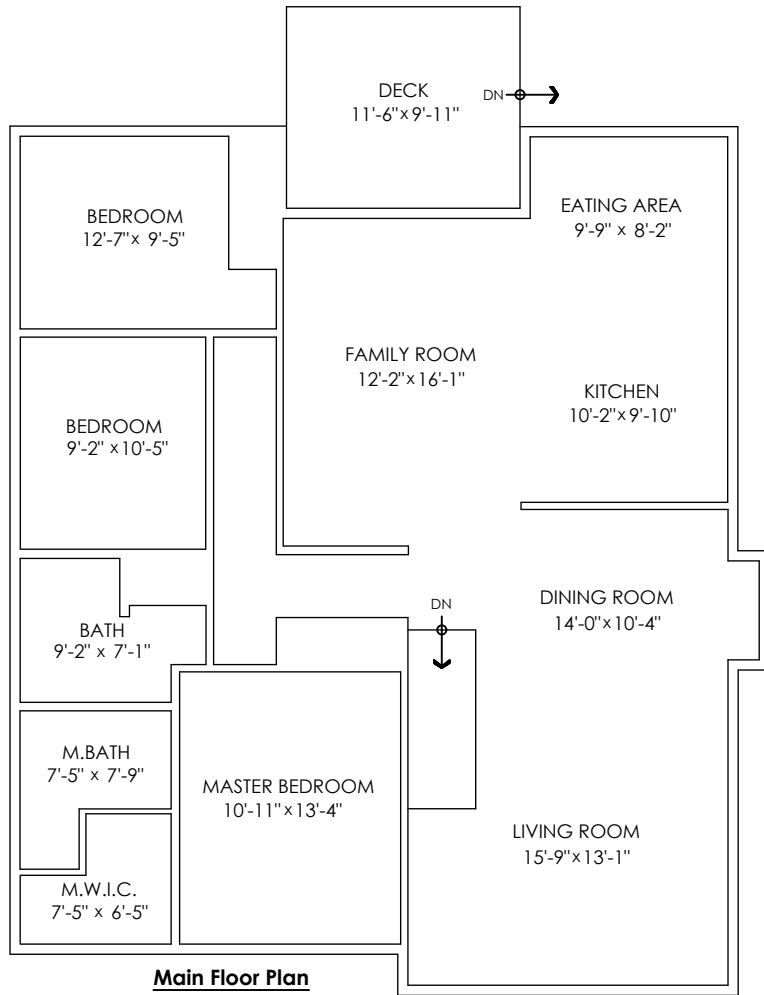
VICED CHILLIWACK'S FAVOURITE REALTOR
CHILLIWACK-DISTRICT REAL ESTATE BOARD
#1 REALTOR
MAR 2015 SALES


CENTURY 21
CHEERHOPE REALTY LTD.

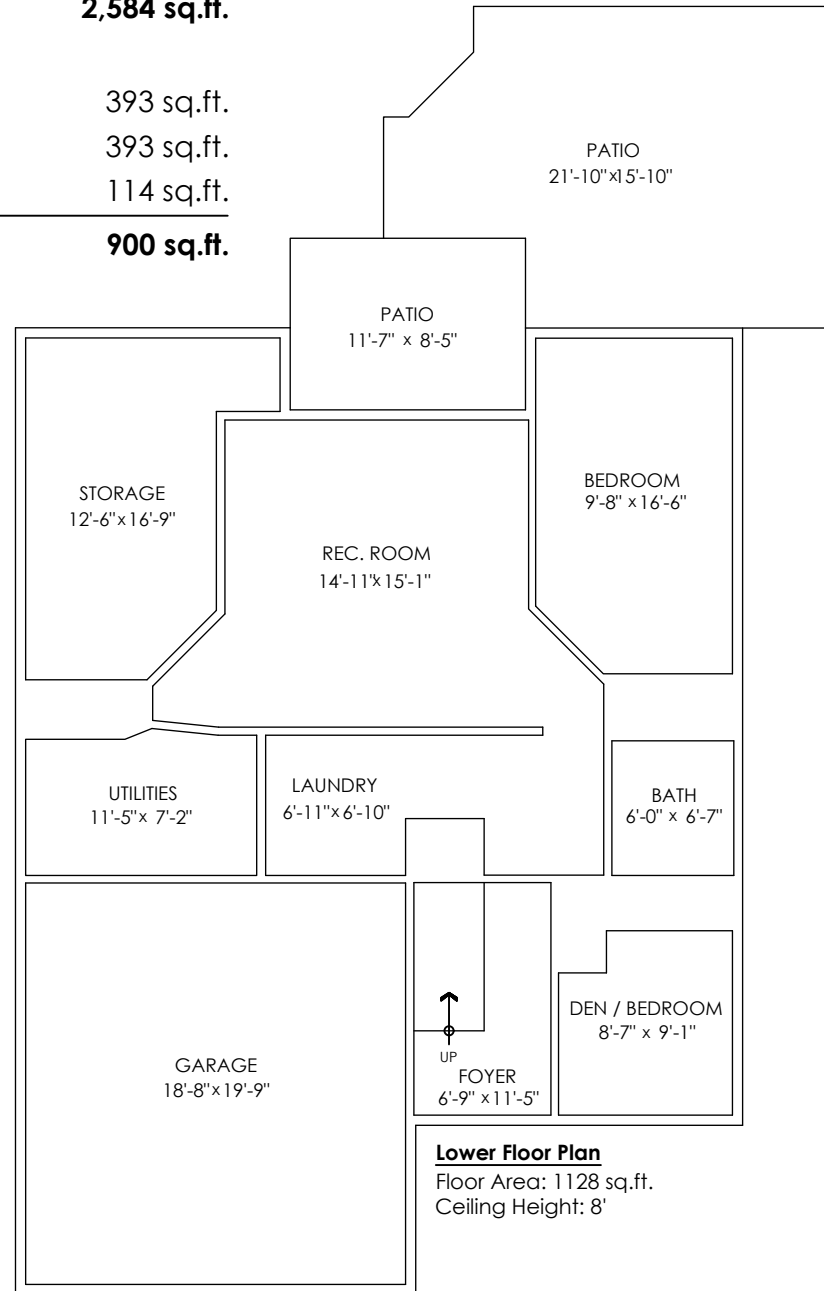
5409 Westwood Dr, Chilliwack

Main Floor: 1,456 sq.ft.
Lower Floor: 1,128 sq.ft.
Total: 2,584 sq.ft.

Garage: 393 sq.ft.
Patios: 393 sq.ft.
Deck: 114 sq.ft.
Total Extras: 900 sq.ft.



Main Floor Plan
Floor Area: 1456 sq.ft.
Ceiling Height: 8'



Lower Floor Plan
Floor Area: 1128 sq.ft.
Ceiling Height: 8'



Measuring, Design & Permits | 604-876-3738

Houses:

Total square footage is calculated to the outside of exterior walls.

Room sizes are dimensioned to the inside of the walls. This is because you need to know what you can fit in that room. When you add up the total of the room sizes it will not equal the total square footage of the property. This method of adding up room sizes will not account for wall thickness, interior hallways, exterior wall thickness, closets and many other areas that are included in total sqft.

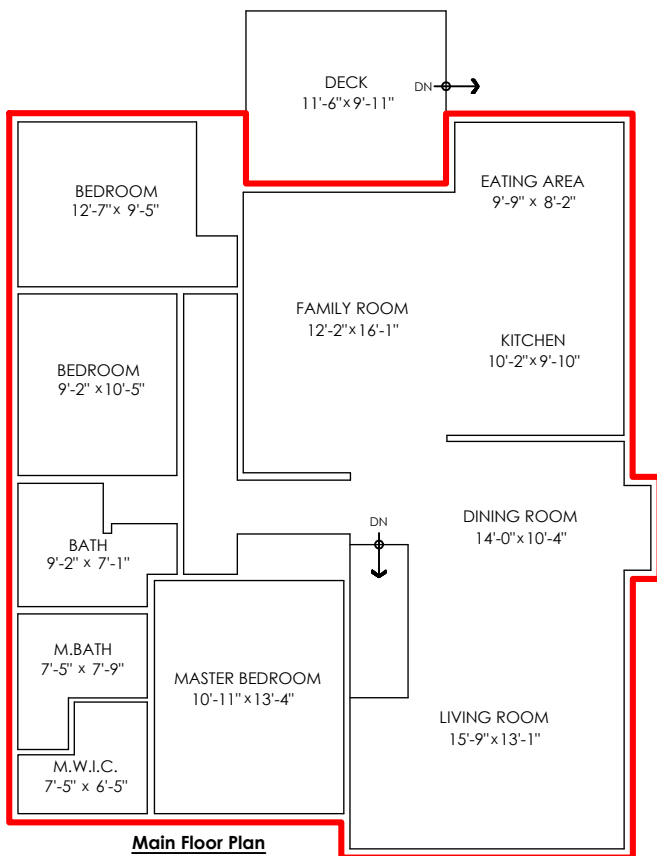
Any space that is not suitable for year-round use or has a ceiling height of less than 4 feet will not be considered living space. An example of this includes a deck, garage or attic. If there isn't heat, insulation or room for an adult to stand, then it will not be included in the living space.

Cantilevered fireplaces, chimneys and plant windows are also not considered living space.

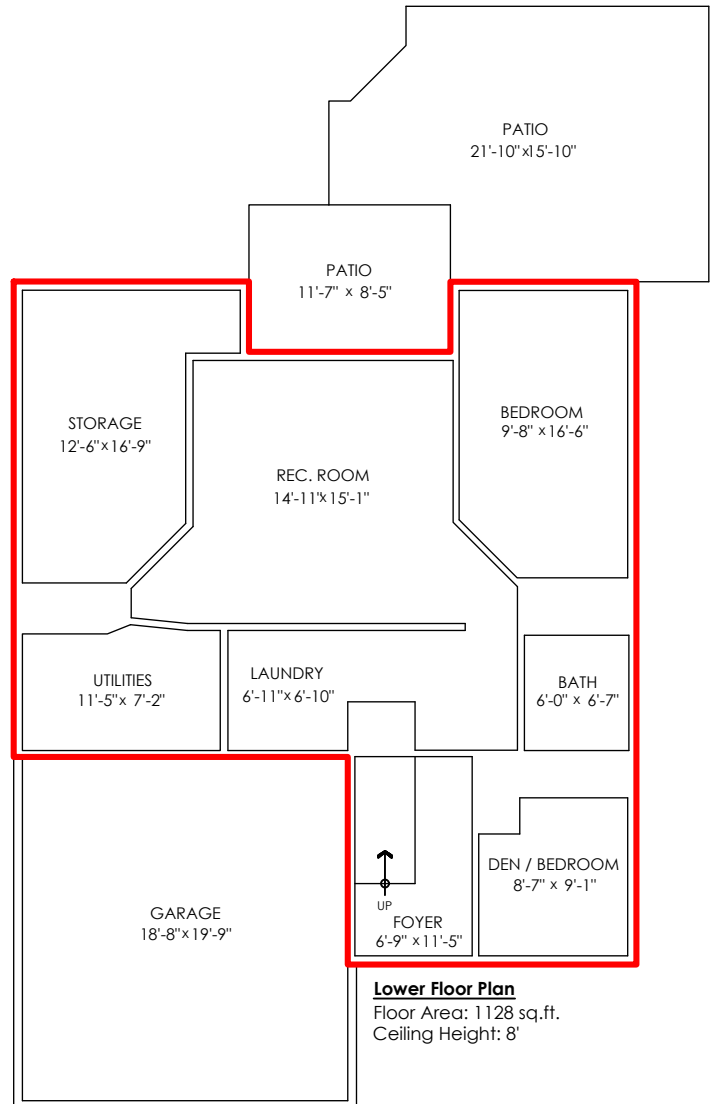
Included in the living space will be the measurements for stair treads for the floor they service as well as the space under the lowest floor's stairs.

Areas open to the floor below (also known as double height ceilings) are not considered living space because there is no floor.

Main Floor:	1,456 sq.ft.
Lower Floor:	1,128 sq.ft.
Total:	2,584 sq.ft.
Garage:	393 sq.ft.
Patios:	393 sq.ft.
Deck:	114 sq.ft.
Total Extras:	900 sq.ft.



Main Floor Plan
Floor Area: 1456 sq.ft.
Ceiling Height: 8'



Lower Floor Plan
Floor Area: 1128 sq.ft.
Ceiling Height: 8'