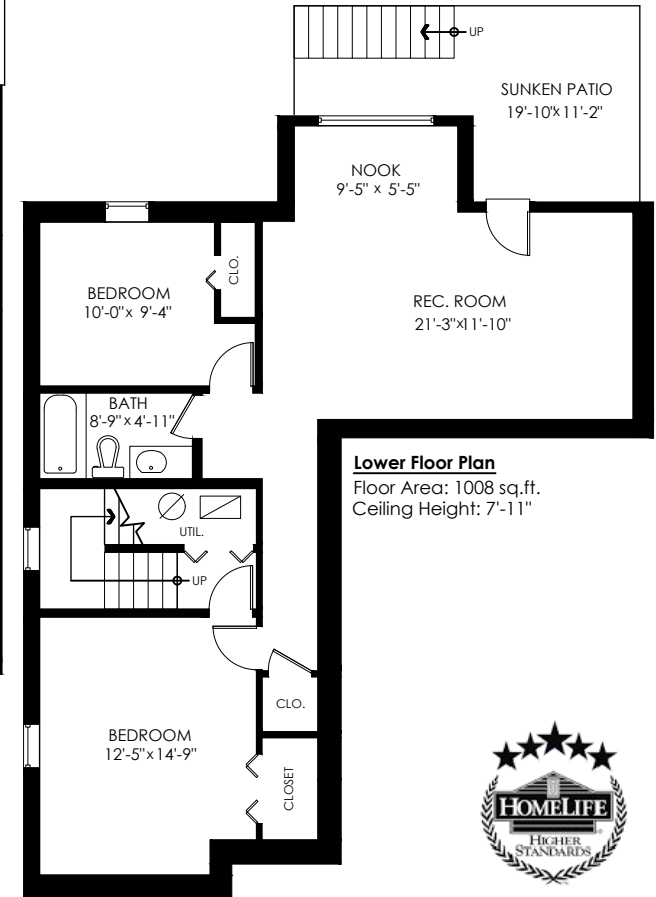
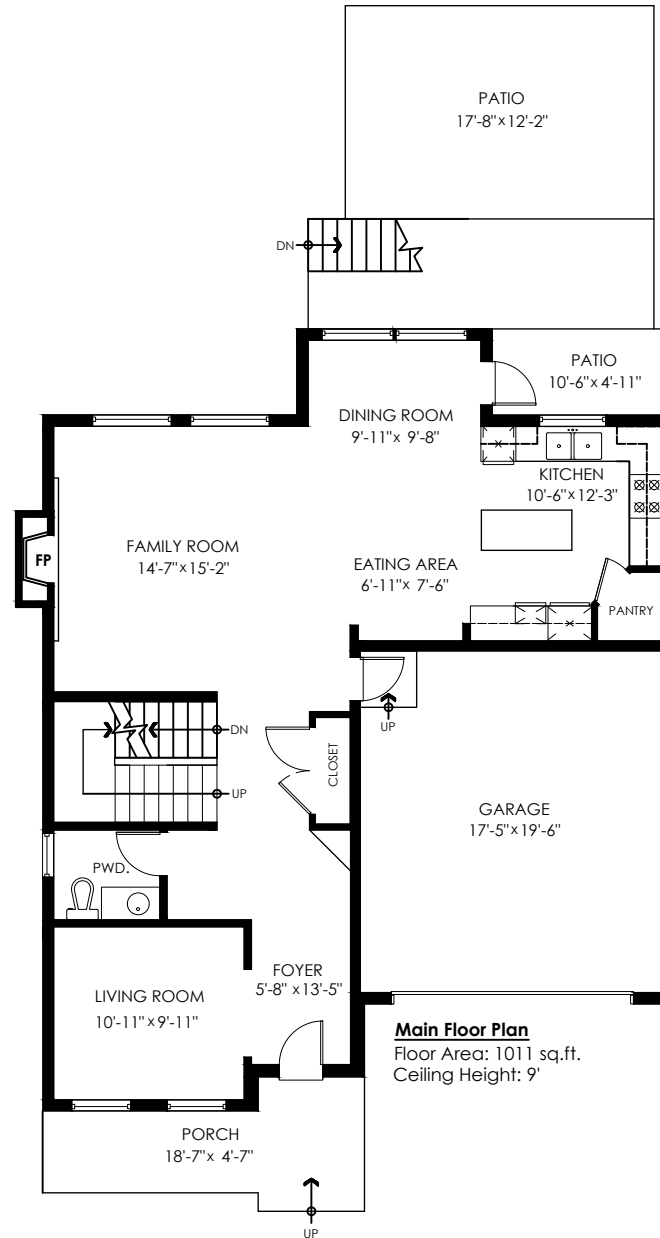
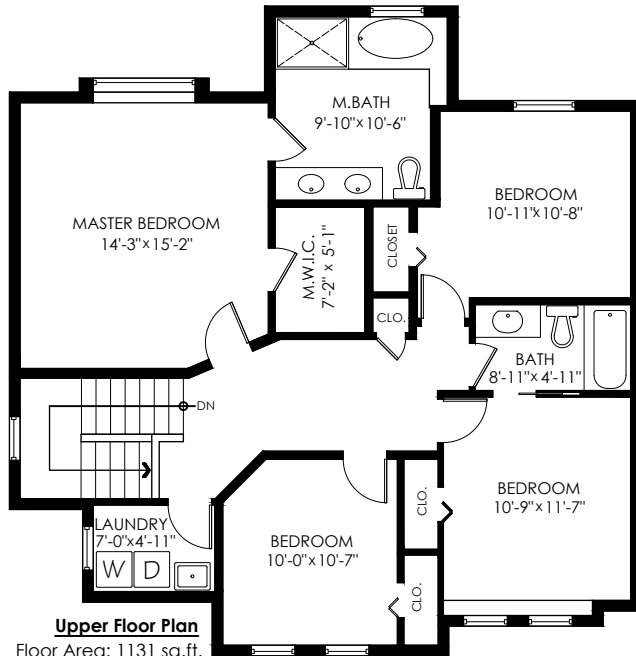


DANIELLE HRASKO

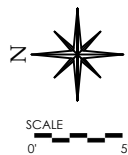
604-725-9894 DANIELLE@WHITEROCKLIFE.CA
WWW.WHITEROCKLIFE.CA

6092 145B St, Surrey



Main Floor: 1,011 sq.ft.
Upper Floor: 1,131 sq.ft.
Lower Floor: 1,008 sq.ft.
Total: 3,150 sq.ft.

Garage: 362 sq.ft.
Main Floor Patios: 268 sq.ft.
Sunken Patio: 170 sq.ft.
Porch: 105 sq.ft.
Total Extras: 905 sq.ft.



Measuring, Design & Permits | 604-876-3738



6092 145B St, Surrey

INFO@COTALA.COM
 (604) 514-9589
 WWW.COTALA.COM

Houses:

Total square footage is calculated to the outside of exterior walls.

Room sizes are dimensioned to the inside of the walls. This is because you need to know what you can fit in that room. When you add up the total of the room sizes it will not equal the total square footage of the property. This method of adding up room sizes will not account for wall thickness, interior hallways, exterior wall thickness, closets and many other areas that are included is total sqft.

Any space that is not suitable for year-round use or has a ceiling height of less than 4 feet will not be considered living space. An example of this includes a deck, garage or attic. If there isn't heat, insulation or room for an adult to stand, then it will not be included in the living space.

Cantilevered fireplaces, chimneys and plant windows are also not considered living space.

Included in the living space will be the measurements for stair treads for the floor they service as well as the space under the lowest floor's stairs.

Areas open to the floor below (also known as double height ceilings) are not considered living space because there is no floor.

Main Floor: 1,011 sq.ft.
 Upper Floor: 1,131 sq.ft.
 Lower Floor: 1,008 sq.ft.
Total: 3,150 sq.ft.

Garage: 362 sq.ft.
 Main Floor Patios: 268 sq.ft.
 Sunken Patio: 170 sq.ft.
 Porch: 105 sq.ft.
Total Extras: 905 sq.ft.

