

Sabrina vandenBrink

604.858.1857

sabrinavandenbrinkteam@gmail.com

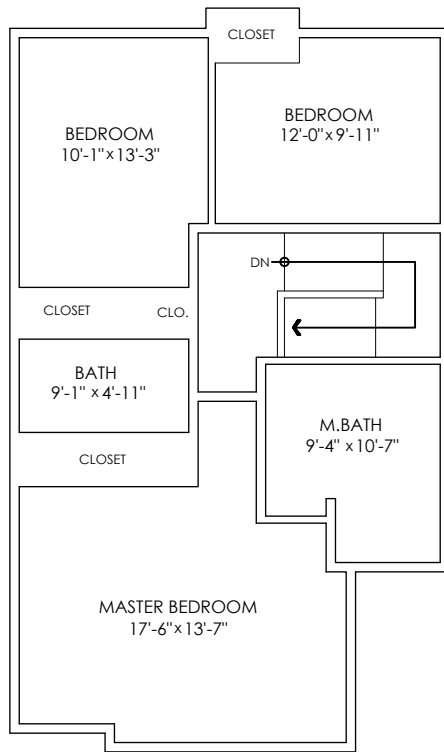
www.chilliwackproperties.net

CHILLIWACK REAL ESTATE

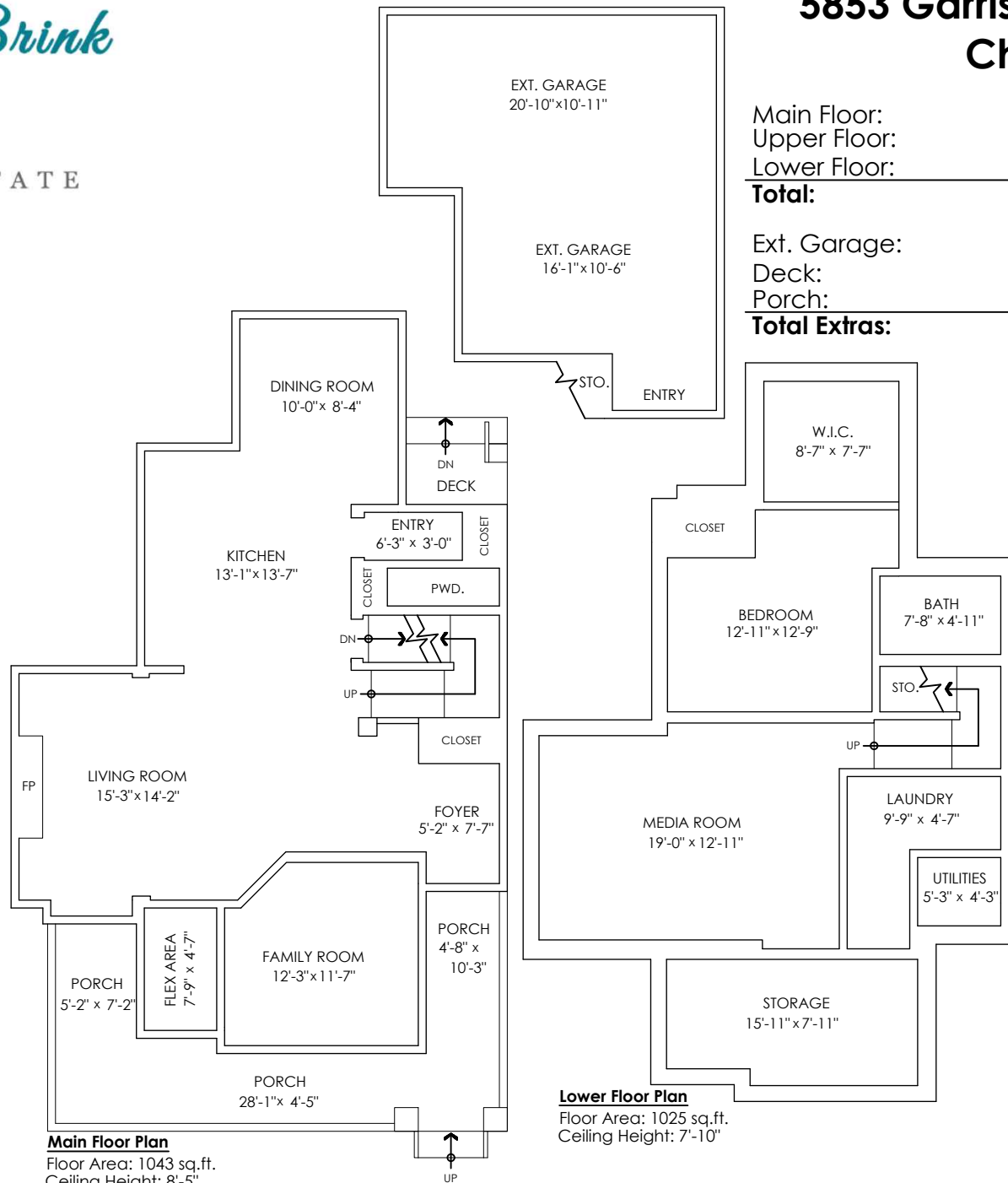
5853 Garrison Blvd, Chilliwack

Main Floor:	1,043 sq.ft.
Upper Floor:	858 sq.ft.
Lower Floor:	1,025 sq.ft.
Total:	2,926 sq.ft.

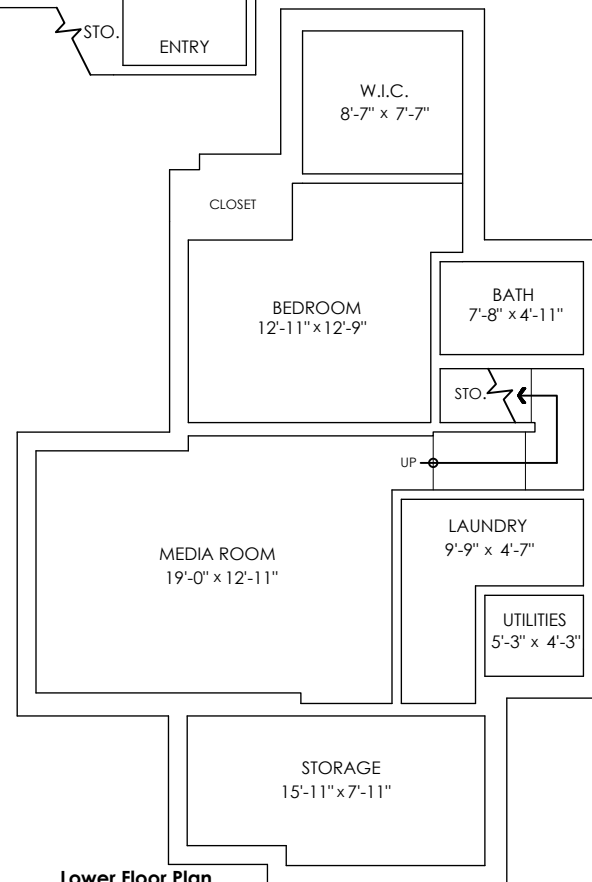
Ext. Garage:	476 sq.ft.
Deck:	23 sq.ft.
Porch:	242 sq.ft.
Total Extras:	741 sq.ft.



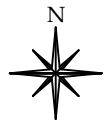
Upper Floor Plan
 Floor Area: 858 sq.ft.
 Ceiling Height: 8'-0"



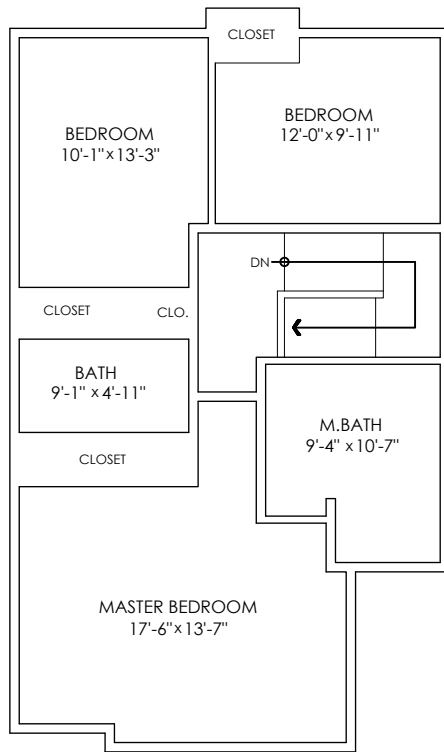
Main Floor Plan
 Floor Area: 1043 sq.ft.
 Ceiling Height: 8'-5"



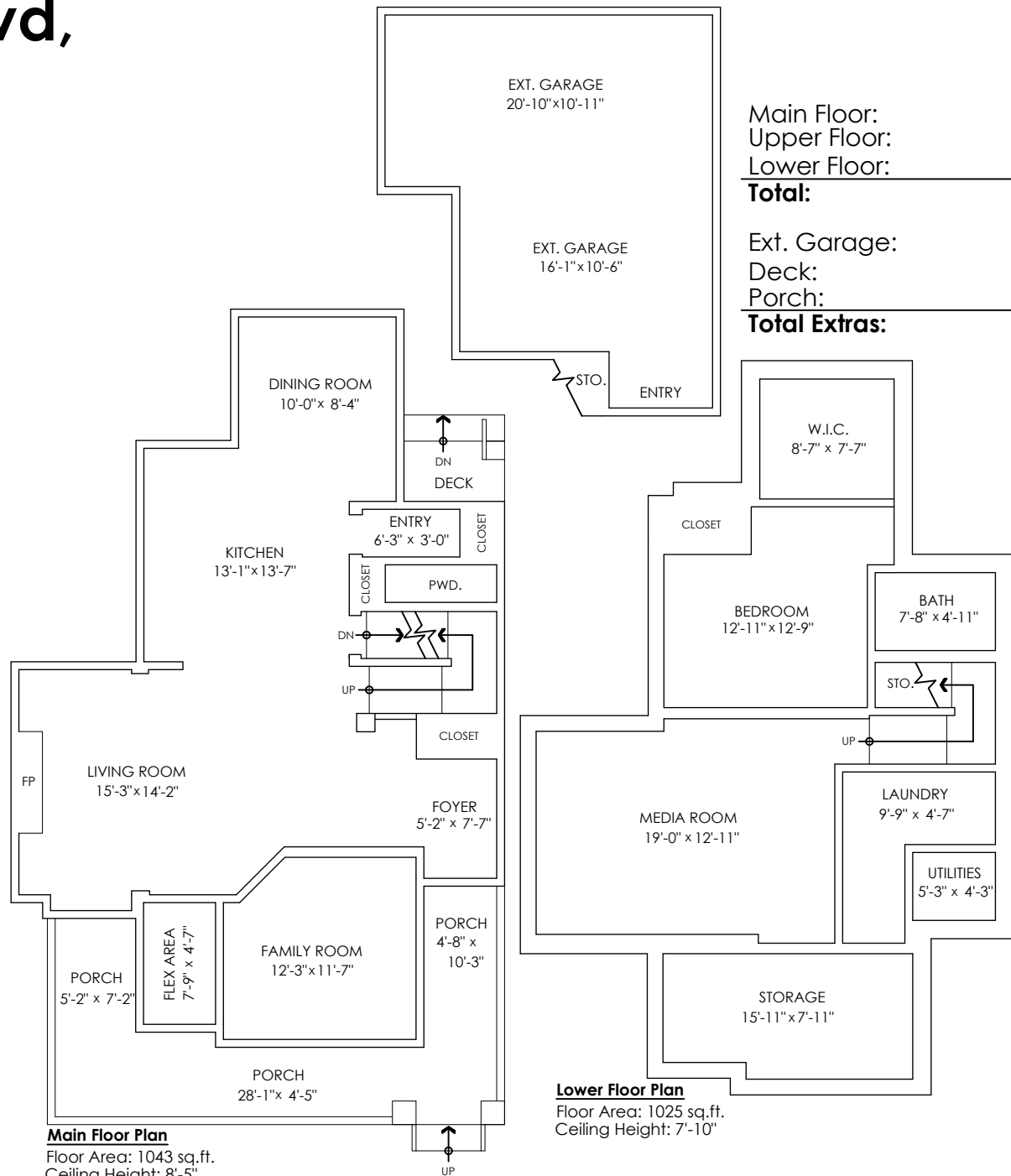
Lower Floor Plan
 Floor Area: 1025 sq.ft.
 Ceiling Height: 7'-10"



5853 Garrison Blvd, Chilliwack



Upper Floor Plan
 Floor Area: 858 sq.ft.
 Ceiling Height: 8'-0"

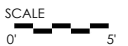
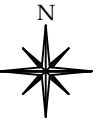


Main Floor Plan
 Floor Area: 1043 sq.ft.
 Ceiling Height: 8'-5"

Lower Floor Plan
 Floor Area: 1025 sq.ft.
 Ceiling Height: 7'-10"

Main Floor:	1,043 sq.ft.
Upper Floor:	858 sq.ft.
Lower Floor:	1,025 sq.ft.
Total:	2,926 sq.ft.

Ext. Garage:	467 sq.ft.
Deck:	23 sq.ft.
Porch:	242 sq.ft.
Total Extras:	732 sq.ft.





Houses:

Total square footage is calculated to the outside of exterior walls.

Room sizes are dimensioned to the inside of the walls. This is because you need to know what you can fit in that room. When you add up the total of the room sizes it will not equal the total square footage of the property. This method of adding up room sizes will not account for wall thickness, interior hallways, exterior wall thickness, closets and many other areas that are included in total sqft.

Any space that is not suitable for year-round use or has a ceiling height of less than 4 feet will not be considered living space. An example of this includes a deck, garage or attic. If there isn't heat, insulation or room for an adult to stand, then it will not be included in the living space.

Cantilevered fireplaces, chimneys and plant windows are also not considered living space.

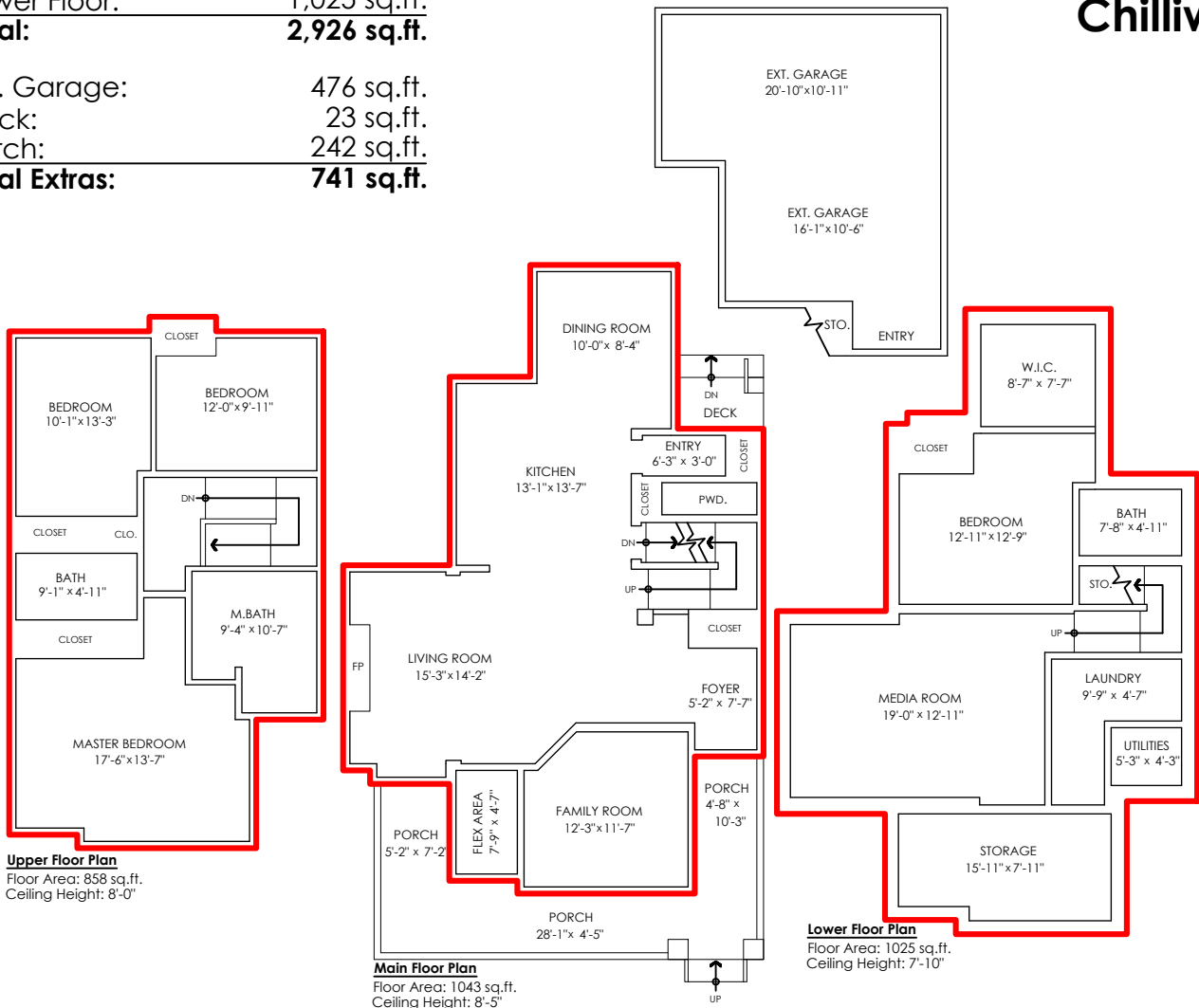
Included in the living space will be the measurements for stair treads for the floor they service as well as the space under the lowest floor's stairs.

Areas open to the floor below (also known as double height ceilings) are not considered living space because there is no floor.

5853 Garrison Blvd, Chilliwack

Main Floor:	1,043 sq.ft.
Upper Floor:	858 sq.ft.
Lower Floor:	1,025 sq.ft.
Total:	2,926 sq.ft.

Ext. Garage:	476 sq.ft.
Deck:	23 sq.ft.
Porch:	242 sq.ft.
Total Extras:	741 sq.ft.



Upper Floor Plan
Floor Area: 858 sq.ft.
Ceiling Height: 8'-0"

Main Floor Plan
Floor Area: 1043 sq.ft.
Ceiling Height: 8'-5"

Lower Floor Plan
Floor Area: 1025 sq.ft.
Ceiling Height: 7'-10"